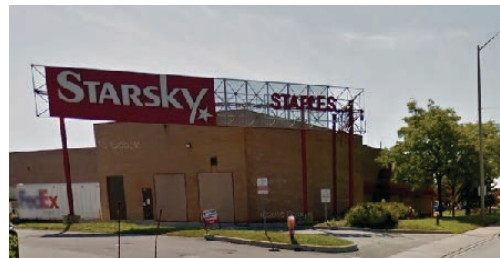


2050 DUNDAS STREET EAST

RETAIL SPACE

FOR LEASE

Dundas Street East in Mississauga, ON
Just Off Highway 427, North of QEW



PROPERTY PROFILE & LOCATION

- Close to Hwy 427, 401, 410 and 10 minutes to Pearson International Airport
- Highly visible next to busy Starsky Fine Foods, Staples and Leon's
- High exposure with great visibility to busy, Dundas Street East just off Hwy 427, north of QEW

SPACE AVAILABLE

Unit #	Square Footage	Availability
Unit 1	13,475 sq. ft.	Nov 1, 2016
Unit 4	901 sq. ft.	April 1, 2016
Unit 5	3,594 sq. ft.	Immediately

SITE FEATURES

- Excellent Location For Showroom, Medical Services, Gym, Furniture, Bedding, Flooring and Lifestyle Store, Open concept
- 20 Parking spots out front, more parking at rear and side
- Transportation friendly, with many bus routes close by

DEMOGRAPHICS

- Total Population: 205,127 (within 5 kilometres)
- Average Household Income: \$96,995 (within 5 kilometres)
- Total Households: 80,668 (within 5 kilometres)

Owned & Managed By:

**Firm
Capital**
Firm Capital Properties Inc.

FIRM CAPITAL PROPERTIES INC. LEASING CONTACT

Chris Serrie, National Director of Leasing

163 Cartwright Avenue, Toronto, ON M6A 1V5

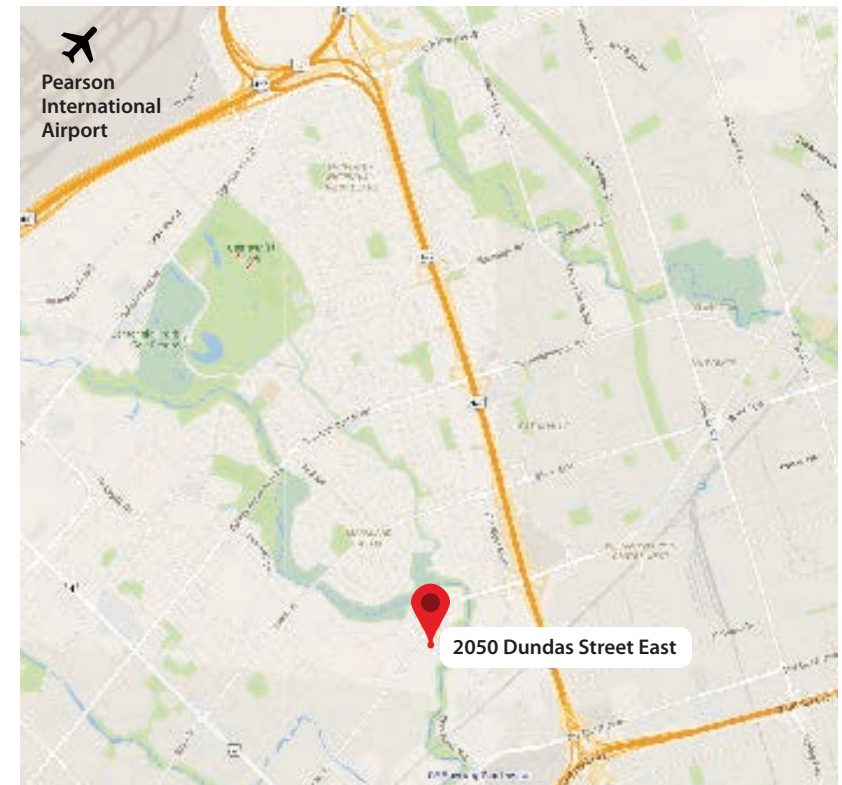
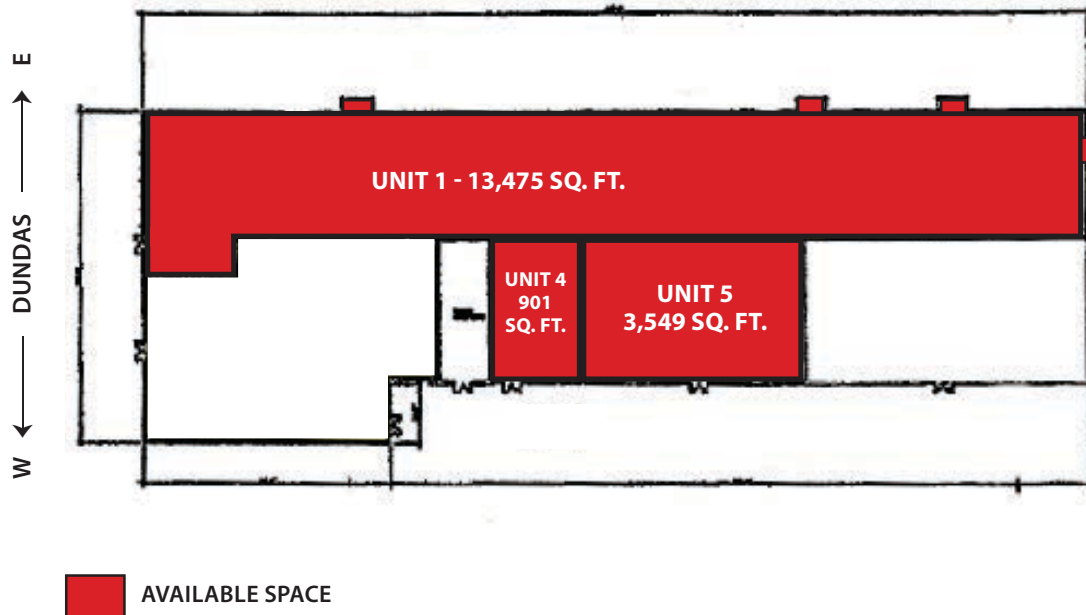
T. 416.635.0221 ext. 349 | E. cserrie@firmcapital.com

2050 DUNDAS STREET EAST

RETAIL SPACE

FOR LEASE

Dundas Street East in Mississauga, ON
Just Off Highway 427, North of QEW



Owned & Managed By:

**Firm
Capital**
Firm Capital Properties Inc.

FIRM CAPITAL PROPERTIES INC. LEASING CONTACT

Chris Serrie, National Director of Leasing

163 Cartwright Avenue, Toronto, ON M6A 1V5

T. 416.635.0221 ext. 349 | E. cserrie@firmcapital.com